

# RobLight



---

## Super Nova

---

User manual

# RobLight

## Introduction

---

The RobLight Super Nova is designed for indoor use in dry locations with glass and PMMA fibre harness. It can be used in all installations set-ups, including closed compartments.

## Product overview/unboxing

---

1 Super Nova  
1 User manual

### Applies to :

0301 2375	Super Nova Clamp Single Focus
0301 2370	Super Nova Surface Focus
0301 2380	Super Nova Magnet Focus

## Technical data

---

### General

---

Fibre type	PMMA or glass
Material	Aluminium, POM and other
Dimensions (L x H x W)	47 to 61 X Ø17 mm
Weight (total)	7.5 to 21g

## Installation instructions

---

Follow the installation instructions to ensure

- Safe operation
- Full functionality
- Stated expected lifetime
- Uninterrupted illumination

# RobLight

## Mounting



Max 10 mm  
Clamp Single 0301 2375



Surface 0301 2370



Magnet 0301 2380



Press in fibre micro termination



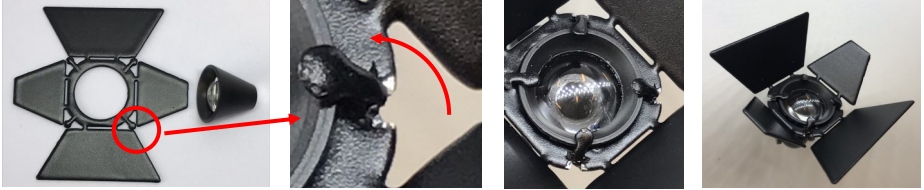
Position adjustment using allen key



Focus adjustment

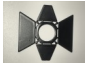
# RobLight

## Installing accessories



Mounting of barndoors, bend down bracket holders

## Accessories

	Part name	Description	Ordering
	Barndoor, flat		4300 3018

# RobLight

RobLight A/S, Gl. Skagensvej 105 H, DK-9900 Frederikshavn  
T: +45 9244 4888, E: info@rob-light.com  
www.rob-light.com